

BOQ FORTHE PROPOSED WORKS OF INTERIOR FURNISHING OF UCO BANK SAWAN BRANCH DISTT. NEEMUCH ZONAL OFFICE, INDORE (M.P.)					
	BRANCH DETAIL:		SAWAN		
PART-I: INTERIOR FURNISHING					
S.N.	Description of Item	Unit	Quantity	Rate	EST Amount
A	Gypsum Board False Ceiling				
1	Providing and fixing and finishing Gypsum Board False Ceiling as per drawing made from 60mm x 36mm G.I. 'C' main supports suspended from the ceiling by means of 25mm x 18 mm G.I. suspenders fitted to the ceiling above with anchor fasteners and rowl plugs in concrete ceilings and other suitable approved means on all other type of ceilings as required and as per design, having pattas/concealed coves as indicated in drawings. Fixing 11-12.5mm thick gypsum board on GI channels using good quality self-tapping screws, finishing and jointing two boards with adhesive and jointing tapes finished complete in lines and level including providing coves, cut-outs for light fittings and extra frame work as necessary for AC grills and/or any other cutouts etc. complete in all respects. Quoted rate to include cost of making opening for light fittings, grills, diffusers, coves for fitting of diffused lights etc. as required and making good the same. Cost of additional frame required and/or as directed shall also be included in the rate. It may be noted that the vertical surfaces shall also be measured for payments and the quoted rates should take into account this area. Paintings shall be paid separately under the relevant item.	Sqm	1		
2	Storage Unit 0.45M wide & 0.75M High(Runner)				
	Providing & fixing storage units made up in 18 mm. thk. plywood framework, 8mm. thk. plywood back as required as per design. Good quality hollow shutters should be fixed on SS heavy hinges Storage units. should be finished with 1.0 mm. thk. laminate from external side & oil paint to non laminate ed surfaces. All exposed edges of plywood should have lipping patti on it. Lipping patti should be finished with French polish on it. The cost should include necessary handles, magnetic catches, Godrej make locks etc. complete as per design. Plywood Make : Century / Green as per bank norms Mica : formica, Sunmica , century as per bank norms	Rmt	6.5		
3	Providing and fixing 4MM Thick Plain MDF sheet in required cut design/pattern/shape/size etc. for strengthening of existing furniture /lamination etc. MDF shall be fitted over plywood structures/ lamination. single skin paneling or double skin ply partition. MDF shall be of reputed makes like Century/ Green ply etc. and cost shall include all recommended adhesives, nailing, screwing, g, edge finishing etc. complete,	Sqm	2		

PART-I:INTERIORFURNISHING					
S.N.	<u>DescriptionofItem</u>	<u>Unit</u>	<u>Quantity</u>	<u>Rate</u>	<u>ESTAmou nt</u>
4	PASTING OF MICA				
	<p>Providing and fixing MICA as per bank norms over MDF board. Teakwood lipping etc shall be provided where required or directed cost of lipping will be paid extra</p> <p>Plywood Make : Century / Green as per bank norms Mica : Formica, Sunmica , century as per bank norms</p>	Sqmt	2		
5	PAINTING				
	<p>Providing and applying Putty and Premium Emulsion Paint on Walls, Ceilings etc. (Old or Fresh Work) including surface preparation, cleaning ,scraping old paint off, application of primer ,up to 3coats of putty and finishing with upto two or more coats of ICI Dulux washable emulsion paint or equivalent - roller finish(matt) to all indicated wall surfaces. The paint shall be applied after thorough cleaning of the existing painted/fresh work surfaces so as to achieve a dirt-free, grease-free, plain surface free of residual paints as per manufacturer's specifications, application of primer, requirednumberofcoatsofputtyandapplicationofprimercoatafterproperlevellingofputtyandfinallytobeappliedwith paint. The paint shall be applied as per the manufacturer's recommendations, evenly to produce uniform well finished surface including final cleaning of the premises to the Bank Engineer's/Architect's satisfaction</p>	Sqmt	150		
6	Providing and applying two or more coats of synthetic enamel paint satin finish of make Asian,or equivalent of approved shade and finish on MS CHANNELGATE including of rubbing of existing paints etc. as per the manufacturer's recommendations and to the satisfaction of the Bank Engineer's/Architect's satisfaction.	Sqmt	20		
	Painting of Window grill of size 0.45 x 1M	No.	6		
7	Providing and applying two or more coats of synthetic enamel paint satin finish of make Asian,or equivalent of approved shade and finish on all surfaces except on inner sides of drawers, storage etc. or in items including the cost of painting synthetic enamel in the rates) complete including putty, scaffolding etc. as per the manufacturer's recommendations and to the satisfaction of the Bank Engineer's/Architect's satisfaction	Sqmt	55		
8	Providing and applying two or more coats of Oil bound distemper paint of make Asian or equivalent of approved shade as per bank norms etc. complete	Sqmt	50		
9	Dismantling & removing of existing furniture as per instruction given by bank and removing of wooden items & garbage to nearest disposal place approximate. 5Km from branch or as suggested by bank etc. complete, ITEM includes Back Runner & Wall paneling	Job	1		

PART-I:INTERIORFURNISHING					
10	Providing and Applying anti-termite treatment using premise chemical inclusive of chloro 50% cypermethrine 25% and fortex 10gm warranty should be period of 5years mandatory thereafter certificate of the work should be submitted to the zonal office mandatory.	Sqmt	80		
11	Cleaning of premises furniture like manager table , officer table , cash table , counter , & writing stand etc. complete inclusive of cost of rubbing / finishing material etc. complete	Job	1		
12	Providing and fixing Pin-up boards of 12mm thk. pinboard covered with plain matty/cotton fabric as per approval, the fabric stuck with rubber based adhesive to the board as instructed. Inclusive of base frame of size 7.5cm x 7.5cm made in 12mm ply duly covered with mica of approved shade , side of frame should be covered with 18 mm cornice TW beading , Cost shall include all tw lipping's, base preparation required and joints on fabric shall not be approved.	Sqmt	2		
	PART-I:INTERIOR FURNISHING Total			Rs	
				Say	
INWORDS(Rs.)					
NOTE: CONTRACTOR SHALL QUOTE RATES EXCLUDING GST WHICH SHALL BE PAID BY THE BANK EXTRA AS PER GOVT. NORMS PREVAILING AT THE TIME OF PAYMENT.					

PRICE BID (PART-II)-ELECTRICAL

NAME OF WORK:- ELECTRIFICATION WORK OF FUCO BANK SAWAN

Elect					
S.No.	DESCRIPTION OF WORKS	UNIT	QTY	RATE	AMOUNT
A.	POINTS & WIRING				
1	LIGHT POINTS				
1	Wiring for light point/fan point/wall fan point/exhaust fan/light socket set etc. with 1.5sq.mm. PVC insulated 1100V grade copper conductor (FRLS) wires & 1.5sq.mm. copper earth wire in concealed/surface using 16SWGMS/PVC conduits, accessories such as bends, tees, saddles, draw boxes, mounting boxes, inner plates, cover plates, ceiling rose etc. (wherever required) and chromium plates brass screws/rowel plugs etc. The circuit wiring starting from DB to point control box/switch box using 2X2.5sq.mm PVC insulated 1100V grade multi stranded copper conductor wire & 2.5sq.mm. PVC insulated earth wire (color code to be used). (Flexible conduit/elbow not allowed). The conduit to be laid in ceiling with proper clamps/wall/floor and filling the chase with cement mortar and finishing the same in original form/wooden partition/above false ceiling with proper clamp set etc. all complete.				
	(Wherever required as per standard specifications).				
	i) Each circuit shall have independent earth wire.				
	ii) Each point shall be earthed.				
	iii) Circuit wiring is to be included in point wiring rates.				
i	Primary points controlled by one 6amp. Modular switch.	Nos.	9		
ii					
iii	Call bell point with ceiling rose/6amp. 3pin socket controlled by one 6amp. Push Modular switch. With call bell	Nos.	1		
iv	Wall fan/exhaust fan point with 6amp 3pin socket controlled by one 6amp. Modular switch. The switch should be at switch board level.	Nos.	1		
v	Ceiling fan point with Step regulator socket switch. The switch should be at switch board level	Nos.	5		
vi	5pin socket controlled by one 6amp. Modular switch complete on same board	Nos.	2		
vii	inverter point/ ups point with 1mm wire	Nos.	4		
2	POWER POINTS				
	Same as serial no. 1, but wiring for 16Amp, 6-pin sockets by using 2*4sq.mm. PVC insulated 1100V grade copper conductor wire with independent 1*4.0sq.mm earth wire from D.B. to first point 1 st socket and 1 st to 2 nd socket with 2*2.5sq.mm and 1*2.5 earth wire including providing and fixing of 16Amp, 6-pin socket with 16Amp. Switch. (Modular type switch/socket/plate etc. complete assembly) max 2 points				
a)	Primary Point	Nos.	1		
b)	Secondary Point				

3	ACPOINTS FOR INDOOR & OUTDOOR UNITS				
3(a)	Same as serial no. 1, but wiring for A/C socket by using 2*4sq.mm. PVC insulated 1100V grade copper conductor wire and earthing with 1*4.0sq.mm. PVC insulated 1100V grade copper conductor wire with modular type 16amp socket & 25amp Modular MCB. complete in all respects to be provided near indoor unit. The point starts from DB to stabilizer to the point near the indoor unit including top.	Nos.	2		
	Primary Points	Nos.	2		
C.	CABLES, MAINS & SUB MAINS				
1	Supplying all materials and laying/pulling 1100 volts grade PVC insulated copper/aluminium conductor wires (FRLS) in MS conduit with all fixing accessories after cutting the floor, wall and the like etc. and plastering the floor level to original. Conduit must be 30mm below the floor finish level.				
i	4X10sq.mm. Aluminium armoured cable (Branch UPS DB)	RM	10		
ii	Supplying & laying in position 4x6Sqmm Copper Cable	RM	20		
ii	Supplying & laying in position 2x2.5 Sqmm Copper wire for circuit	RM	50		

D.	DISTRIBUTION BOARD				
	Supplying, installing, testing & commissioning of surface/recessed mountings, Double door 415 volts TPN MCB distribution board of steel, 1.6mm thick dust phosphatized and painted, inclusive of 100amps, tinned copper busbars, earth bar, common neutral link, din bar for mounting of MCB's detachable gland/knockout plate & with built in loose wire box, and superior make terminal connectors for all incoming and outgoing circuits duly prewired with adequate size of PVC insulated copper wires between the busbars and the MCB's as well as the incoming and up to the terminal connectors/neutral link and ready for installation in following ways as required.				
	Use 'B' curve MCB's for lighting & small power circuits, 'C' curve for motor duty i.e. for pumps, AC motors, window and split AC's etc. & 'D' curve for UPS DB's i.e. for computers/PC's circuit. Main incoming & outgoing circuit MCB's shall be selected accordingly i.e. type B, C & D. Contractor to select the MCB's accordingly as per the nature of the circuit/load.				
	Each DB shall have separate neutral link of rating not less than 100A for each phase. The main incoming neutral link shall be in addition to three outgoing neutral links and shall be of 125A.				
	UPS DB's shall have dedicated Earthing link fixed on insulated supports, which will be in addition to body earth link.				
	All internal interconnecting wiring within the DB's shall be PVC insulated flexible copper conductor wires of adequate capacity as per the current rating.				
	Inside each DB, a DB chart is to be fixed.				
a	4-way TPN DB (LIGHT & Power DB) Double door	No.	1		
	Incomer:-				
	1 No. 63 Amp TPN (10KA) MCB				
	Outgoing:-				
	12 Nos. 6/32 Amp (10KA) SPMCB				

b	4-wayTPNDB(ACDB)	No.	1		
	Incomer:-				
	1No.63AmpTPN(10KA)MCB				
	Outgoing:-				
	5Nos.25Amp(10KA)SPMCB				

E	(LIGHTFITTINGS&ACCESSORIES)				
	Supplying, installationwithhangingsupport,testingandcommissioningoffollowinglightfixtureswith electronicBallasts,Tubes,lamps,allfixingmaterialsincluding connectingwiresetc. allcompleteasper thedirectionsofEngineer-in-charge(AllLEDLightFixturesshouldbecoveredwithminimum3Yearsonsiterepl				
i	LED18Wtube4'-0"Asspecifiedintenderdocumentorapprovedby SBIIMS/Architect.	Nos.	1		
ii	FULLGLOW2X2LED36WslimSmartPanelofmakeAsspecifiedin tenderdocumentorapprovedbySBIIMS/Architect.	Nos.	9		
iii(a)	Supplying, fixing,testing andcommissioning of 15W LEDcommercial typedownlighterofmakeAsspecifiedintenderdocumentorapprovedby SBIIMS/Architect	Nos.	2		
iv	LED9Wbulb" As specifiedintenderdocument or approved bySBIIMS/Architect.	Nos.	1		
v	Supply,installation,testingandcommissioningoffollowingfanswithallfixingmaterialslikewhitePolycarbonate2mmHylemsheetcover,downrods, fanbox as required etc.all completeas per thedirectionsof Engineer in charge				
a	Supply&fixingof230mmexhaustfan'VentilairDXW'withself-closinglouversandplasticbodywithallaccessoriesetc.completeofmakeAsspe cifiedintenderdocumentorapprovedbyconcernedofficeincharge.	Nos.	1		
b	Supply&fixingofceilingfanof1200mmdiamakeasspecifiedintenderdocumen torapprovedbyconcernedofficeinchargeinclusiveofextened rod&fastnerifrequired	Nos.	5		
.F	EARTHINGSYSTEM				
1	Supply,Installation,TestingandCommissioningofMaintenanceFreeEarthingsy stemmadeupofcopperbondedrodof10feetlength,17.2mmdia.(Minimumcop perbondingshallbe0.25mm)alongwithRod-to-Conductorconnectors,Earthenhancementmaterial,PitCoverandotheraccesso riesasrequiredandasperspecificationandotherapplicablecodes(includecham berforearthing,Earthingcertificatetobesubmitted	Nos	1		
2	ProvidingandfixingofCopper/Glstripsinsurfaceorinrecessforloop earthingetc.asrequired.				
i	Providingandfixing2X8SWGdia.CuearthwireinPVCconduiton surfaceorinrecessforloopearthingalongwiththeexistingsurface/recesscablea srequired.	RM	10		
	GRANDTOTALAMOUNT				
	SAY				

TotalWithoutGST

PRICE BID (PART-III)

Name of work: Air condition work of Existing premises Of UCO BANK RATLAM , Zonal Office Indore

Note : For any make, if OEM doesn't has specific star rating for the product but that product has equivalent energy saving as compared to the star rating, then vendor shall mentioned the same against the model number.

Sr. No	Particulars	Product Model No.
1.	1.5 TR Wall mounted Split Unit 5 Star Inverter Model	5 Star Inverter

1AIR-CONDITIONING WORKS :

Air-conditioning System (5 Star - Wall mounted Split Unit)

Equipment Make – Voltas/ LG/ Carrier /Hitachi /Blue star- 5 star split energy saving inverter type

- All the work of Drain pipe/copper pipe/cable shall be properly supported by clamps from the slab.
- The installation of the AC should be done by Authorized agency and certificate of same should be submitted . in warranty period AMC of AC should be part of Vendor and Bank is not liable to call the company.
- All jhiri work should be finished properly by cement plaster .
- All cable & drain pipe work should be measured in presence of architect before finishing / underground / covering of the work

Sr. No	SPLIT TYPE AIR CONDITIONERS				
A.	PART -A				
	HIGH SIDE WORK				
	Description	Unit	Quantity	Rate	Amount
1	Supplying, erection, testing and commissioning following wall mounted Split/ Roof mounted cassette units of Bluestar / Hitachi with cordless remote complete with all necessary fittings duly insulated with 9 mm thick nitrile rubber pipe insulation with (evaporator coil – copper only), fan and fan motor, machine control panel improved Refrigerant Joints, .Air conditioners shall be fitted with hermetically sealed type suction cooled reciprocating or discharge cooled rotary compressor or scroll compressor. Compressor unit operating on R-22/ R-410 . All complete as per drawing, approval and instructions of the Employer (Rates to be inclusive of Copper refrigerant pipe with insulation , Drain pipe & labour cost up to 3 Mtr. Length).				
a	1.5 TR wall mounted split unit (Minimum 5-Star rating inverter type) including all necessary fittings and mountings as specified by the manufacturer.	Nos.	2		
	PART A –HIGH SIDE WORK SUB TOTAL AMOUNT				

B.	PART –B				
	LOW SIDE WORK				
1	EXTRA REFRIGERANT PIPING				
	Supplying and laying of Extra copper refrigerant piping with nitrile rubber pipe insulation, both of size as specified by the manufacturer suitable for 1.0 TR/ 1.5/2.0 TR Split type AC (From Indoor to outdoor Units) Beyond 3 M. of Max flow Brand				
b	For 1.5 T Split unit	Mtr.	20		
2	DRAIN PIPING				
	Providing and fixing drain piping up to drain as directed by the engineer in charge with all accessories e.g. elbows, unions, sockets, reducers, reducing tees, nipples etc. Complete job including cutting chiseling in walls, fixing with GI clamps, floor and making good of all chases/ cuts etc. and discharging the drain into a floor trap/ gully as per site conditions with insulation includes the repairing of the cutting part in the wall or floor , both as specified by the manufacturer.				
a	25 mm dia PVC drain pipe for Split AC	Mtr.	10		
3	AUTOMATIC VOLTAGE CONTROLLER				
	Providing and fixing Stabilizer with 3-4 step relay and input voltage range of 130-270 V and output to be 230-240 V (Blue bird/ Logic state/ Inline/ V-Gaurd/Equivalent Reputed Make) (copper winding).				
a	3 KVA (For 1.0/ 1.5 TR Split AC)	Nos.	1		
4	AIR-CONDITIONERS STAND				
	Powder coated readymade stands				
	For 1.5TR Hi Wall split units	Nos.	1		
5	ELECTRICAL CABLES				
	Suitable IS/BIS standard Cable of 1.1-2.2 KV, Multi strand, FRLS 2- 4 C / /2.5 – Sqmm 3 core) as per design requirement of Peak load calculation of specific ACs system installed at site with 1"/1/2"/2" PVC conduit pipe between indoor/outdoor unit				
a	Supplying and laying of Extra Electrical interconnecting control cable from indoor to outdoor of size as specified by the manufacturer suitable for 1.0 TR/ 1.5/2.0 TR Split type AC. 2.5 Sqmm x 4 core of finolex Mac	Mtr.	20		
6	SHIFTNG OF AC				

7	CORE CUTTING				
a	Core cutting member in Non RCC	Mtr.			
b	In RCC member	No.	1	1000	
	PART B –LOW SIDE WORK SUB TOTAL AMOUNT				
	Total cost (A+B)				
	SAY				
Note: The rates quoted includes all other taxes, duties, loading, unloading , transportation, other expenses etc. to site, only GST will be paid Extra					

Amount in words:

Signature of company representative

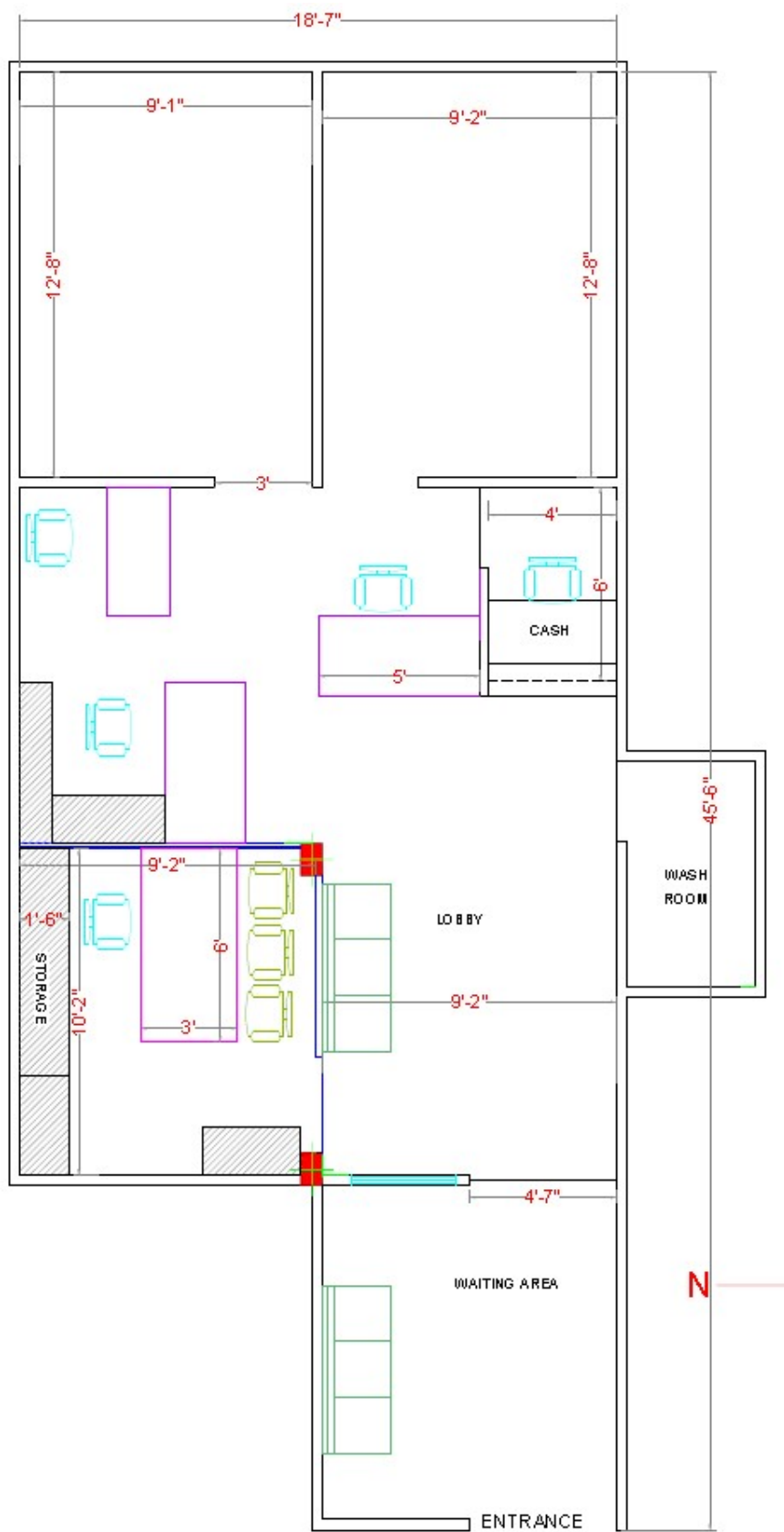
Seal of company/agency

Date

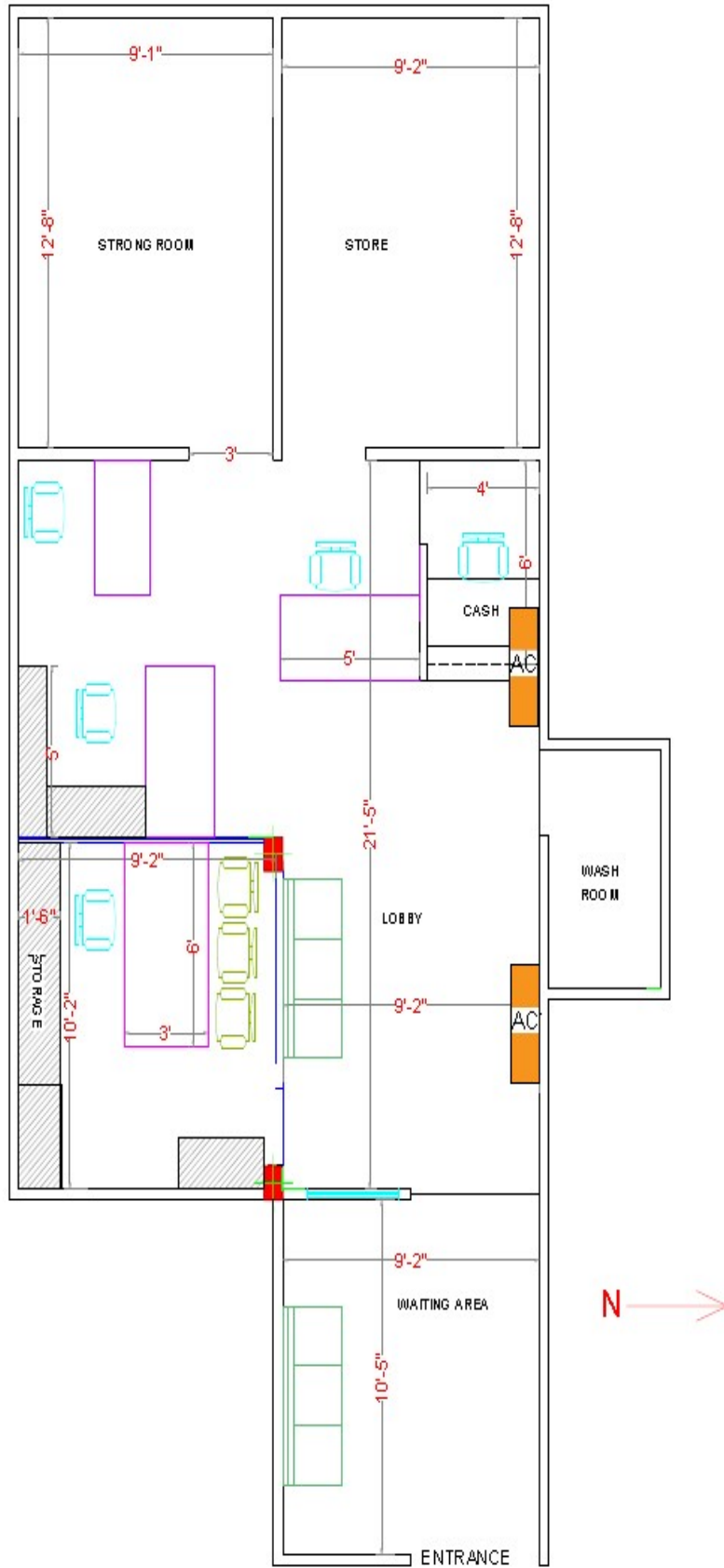
Summary of project

- 1) Cost Of Interior furnishing work =
- 2) Cost of electrification work =
- 3) Cost of Air condition work =

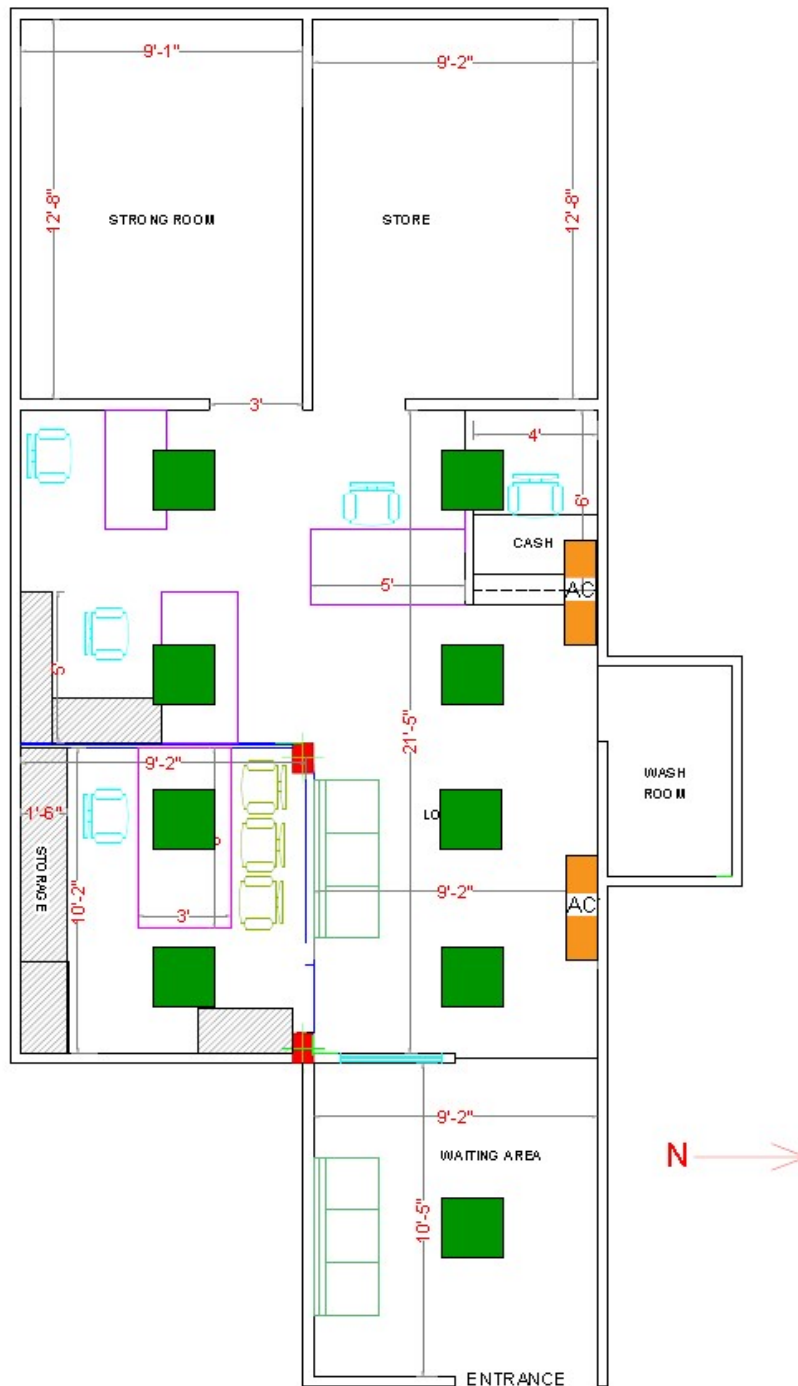
Total cost of Project = Rs. (Excluding GST)
Rs.



FINAL LAYOUT PLAN



AC LYOUT



ELECTRICAL LAYOUT